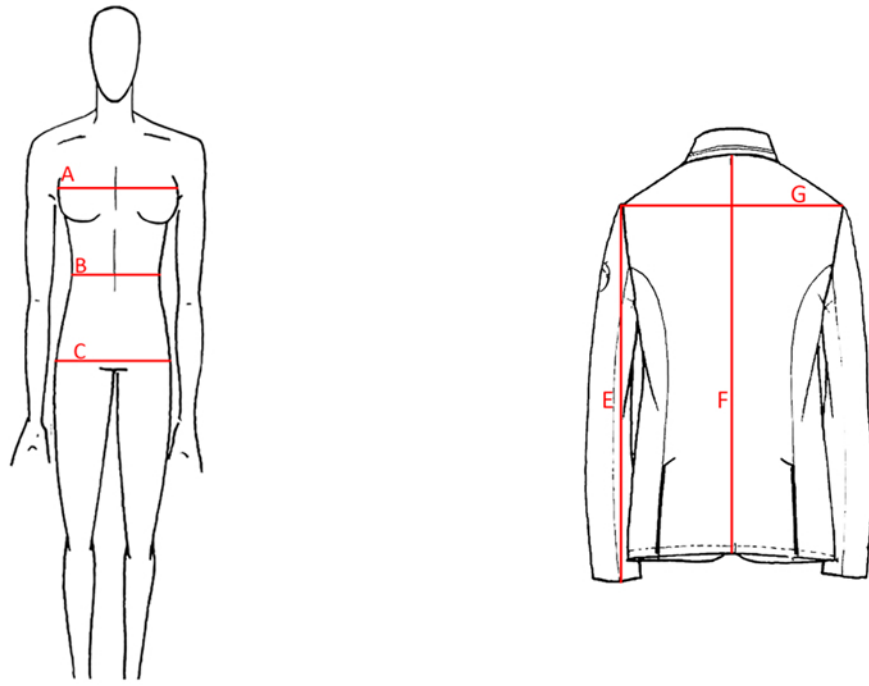




VESTRUM

BODY MEASUREMENT STANDARD



The measurement should be taken directly on body

- Chest width measured where the bust is the largest
- Waist width measured where the waist is smallest
- Hip width measured where the the hip is widest



VESTRUM

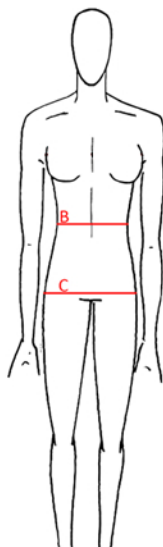
SIZE CONVERSION CHART

IT	36	38	40	42	44	46	48
DE	32	34	36	38	40	42	44
FR	32	34	36	38	40	42	44
EN	4	6	8	10	12	14	16
INT	XXS	XS	S	M	L	XL	XXL



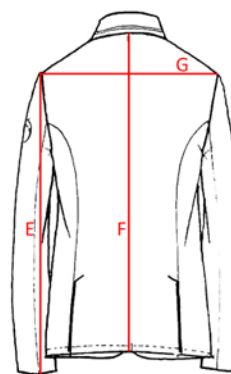
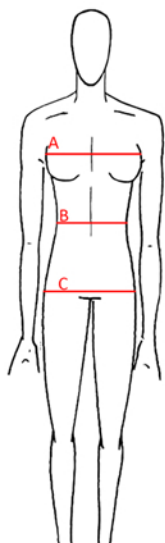
VESTRUM

WOMEN'S BREECHES SIZE GUIDE



IT	36	38	40	42	44	46	48
INT	XXS	XS	S	M	L	XL	XXL
WAIST (B)	56-59	60-63	64-67	68-71	72-75	76-79	80-83
HIP (C)	80-83	84-87	88-91	92-95	96-99	100-103	104-107

WOMEN'S COMPETITION JACKET SIZE GUIDE

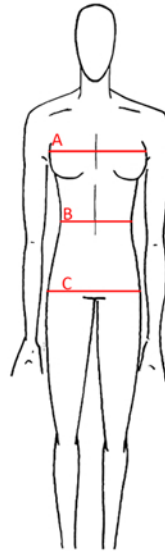


JACKET MEASUREMENT							
IT	36	38	40	42	44	46	48
INT	XXS	XS	S	M	L	XL	XXL
SHOULDERS (G)	34,5-35,5	36-37	37,5-38,5	39-40	40,5-41,5	42-43	43,5-44,5
SLEEVES LENGTH (E)	61,5-62,5	62,5-63,5	63-64	64-65	64,5-65,5	66-67	67-68
LENGTH CENTER BEHIND (F)	60-61	61-62	62-63	63-64	64-65	65-66	66-67
BODY MEASUREMENT							
CHEST (A)	76-79	80-83	84-87	88-91	92-95	96-99	100-103
WAIST (B)	56-59	60-63	64-67	T	72-75	76-79	80-83
HIP (C)	80-83	84-87	88-91	92-95	96-99	100-103	104-107



VESTRUM

SHIRT, TOP, JACKET, JUMPER SIZE GUIDE



BODY MEASUREMENT							
IT	36	38	40	42	44	46	48
INT	XXS	XS	S	M	L	XL	XXL
CHEST (A)	76-79	80-83	84-87	88-91	92-95	96-99	100-103
WAIST (B)	56-59	60-63	64-67	68-71	72-75	76-79	80-83
HIP (C)	80-83	84-87	88-91	92-95	96-99	100-103	104-107